

Bracket matching system



Click on the Camera to check installation bracket



Click [HERE](#) to check full bracket system

Bracket matching system



For DI-Fixed Lens, DV-Fixed Lens, DH-Fixed Lens



Bracket matching system



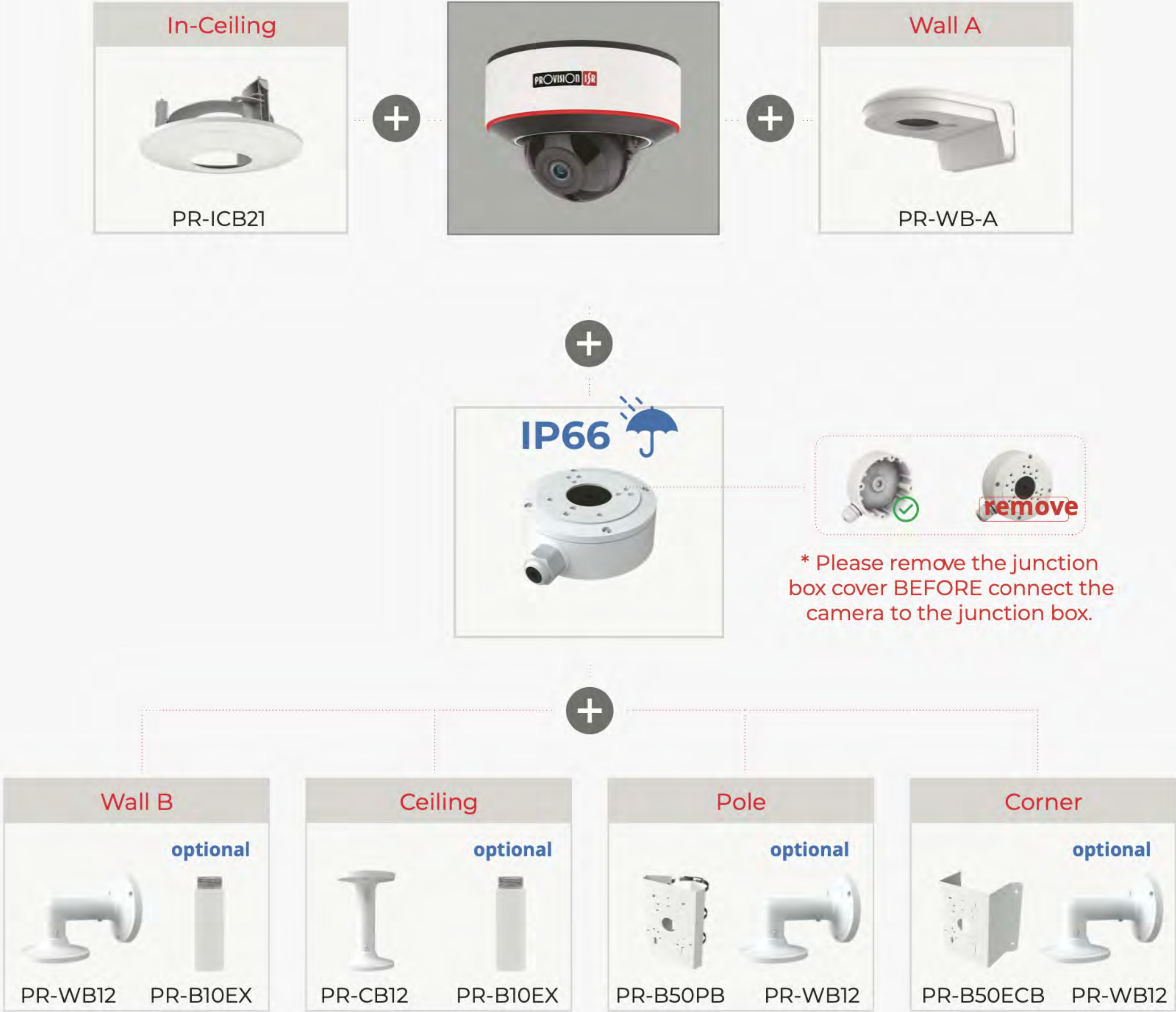
For DI-VF Lens, DI-MVF Lens, DH-MVF Lens



Bracket matching system



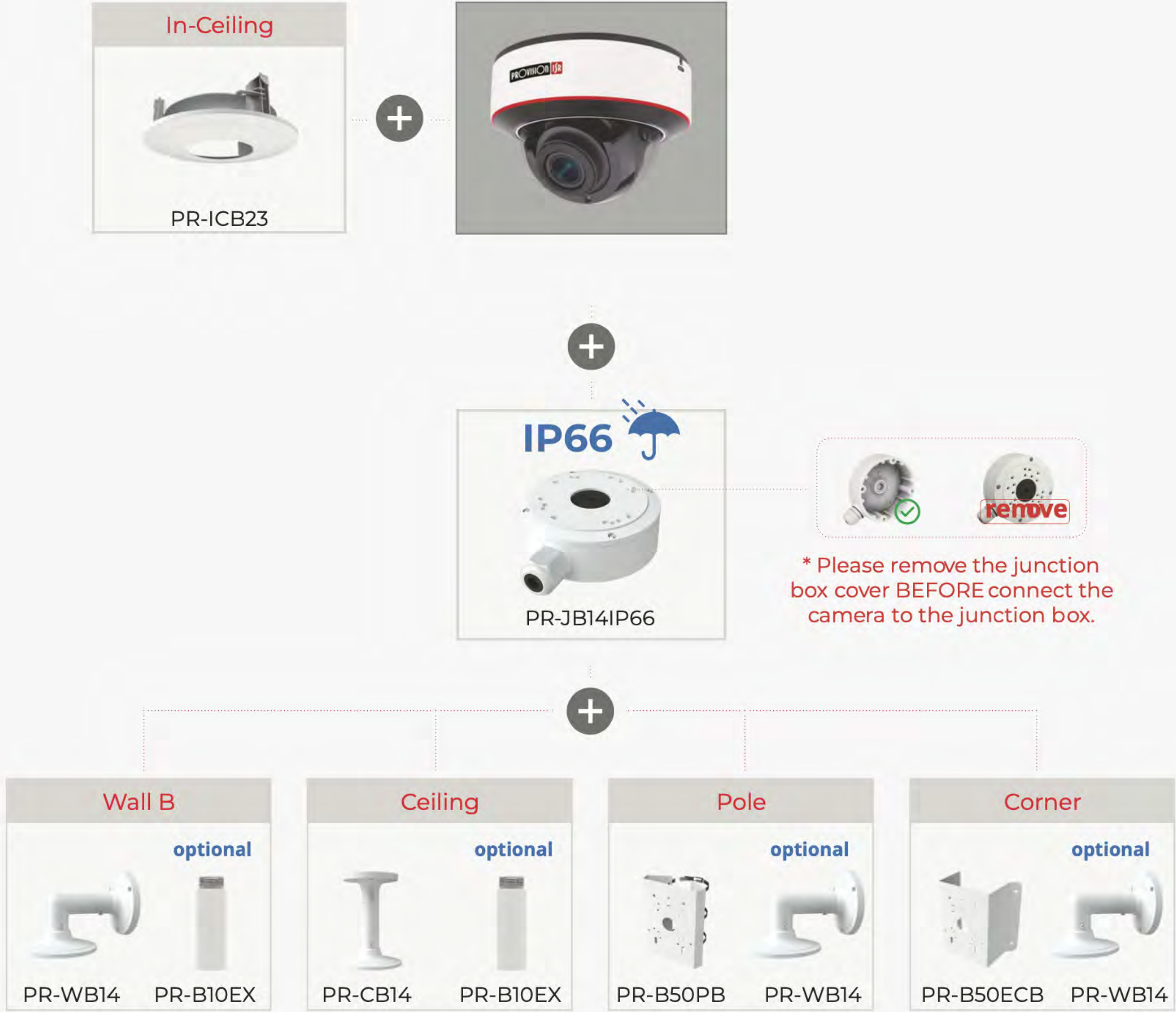
For DAI-Fixed Lens



Bracket matching system



For DAI-VF Lens, DAI-MVF Lens



Bracket matching system



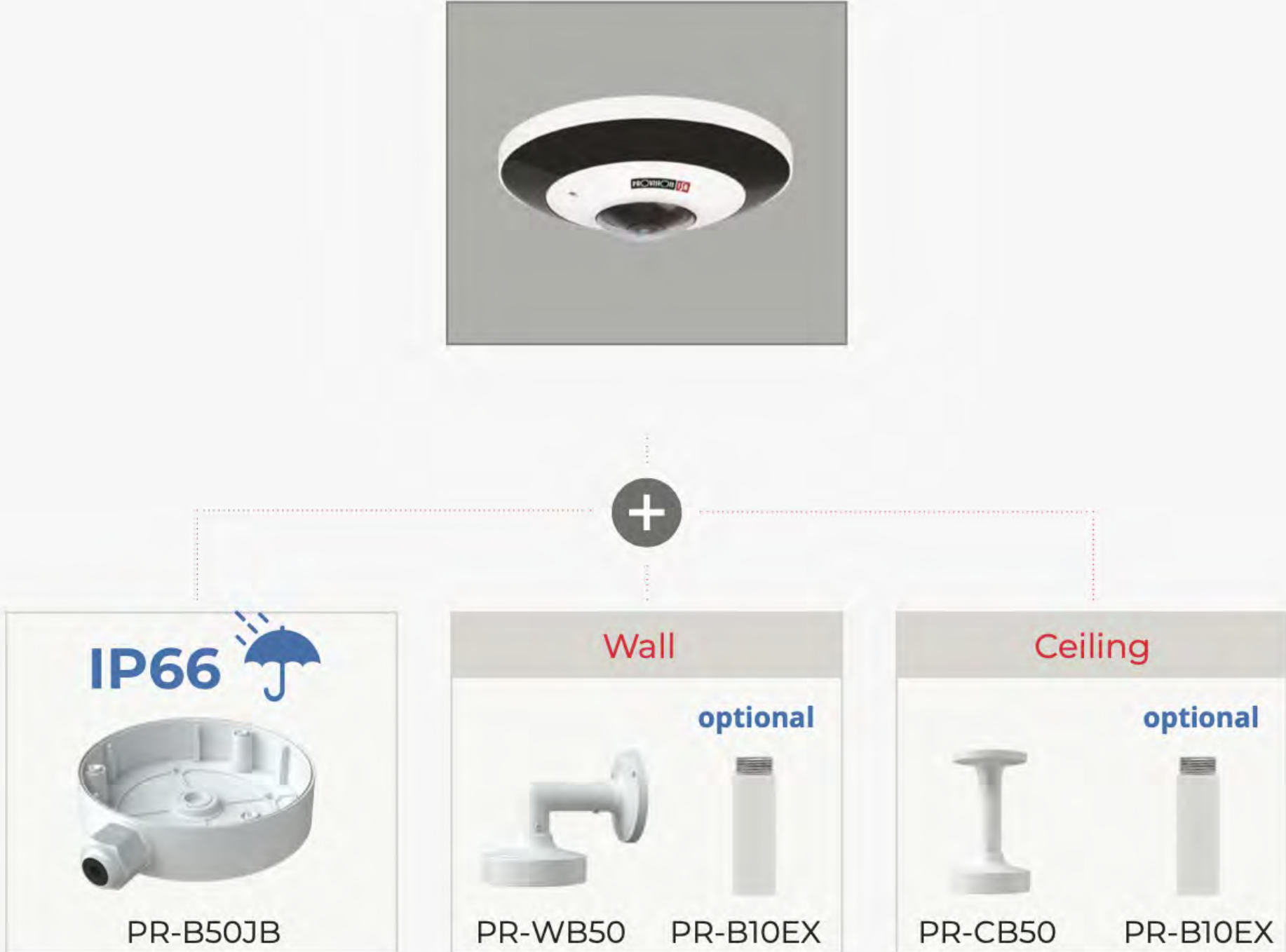
For DMA



Bracket matching system



For FEI



Bracket matching system



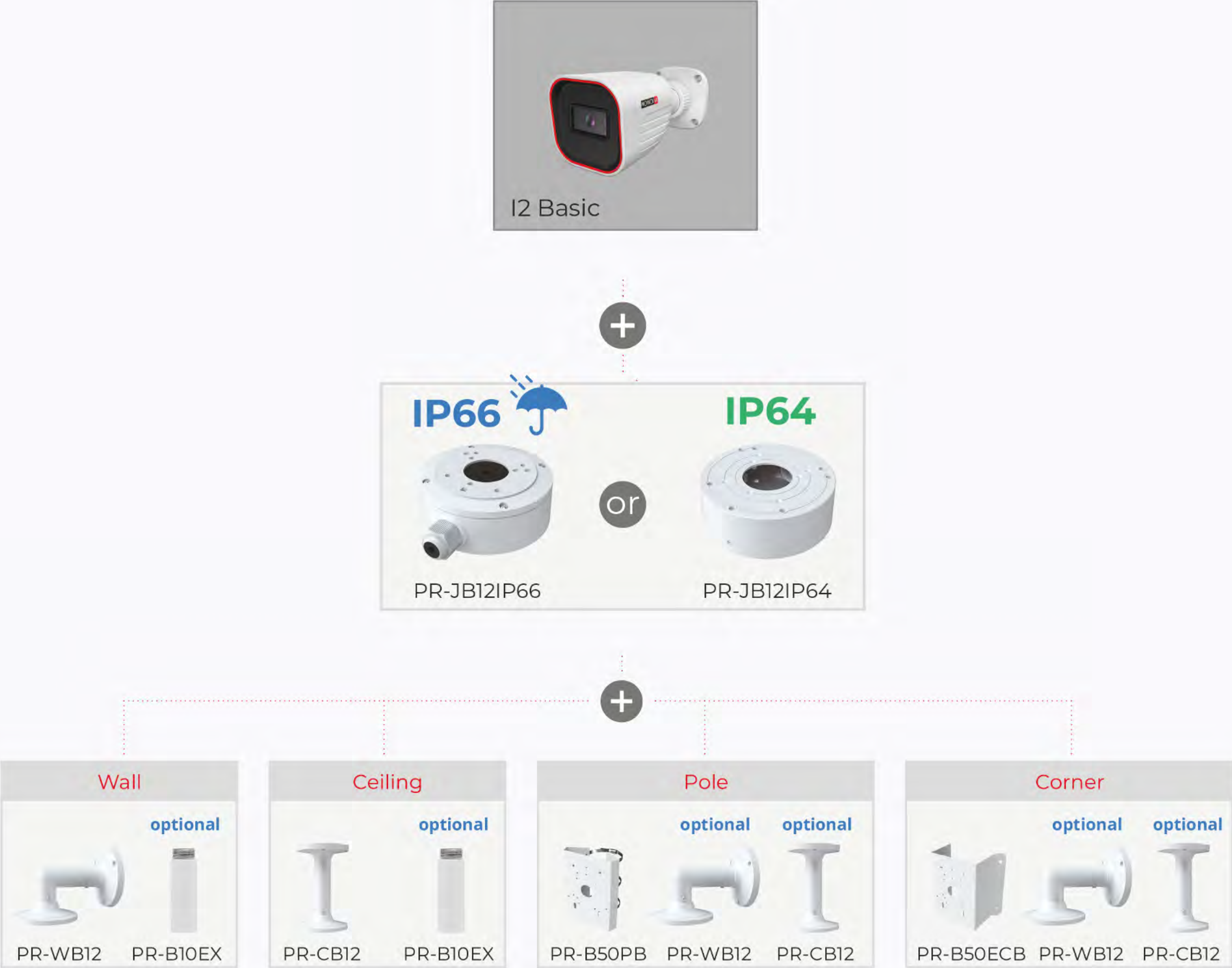
DI Basic



Bracket matching system



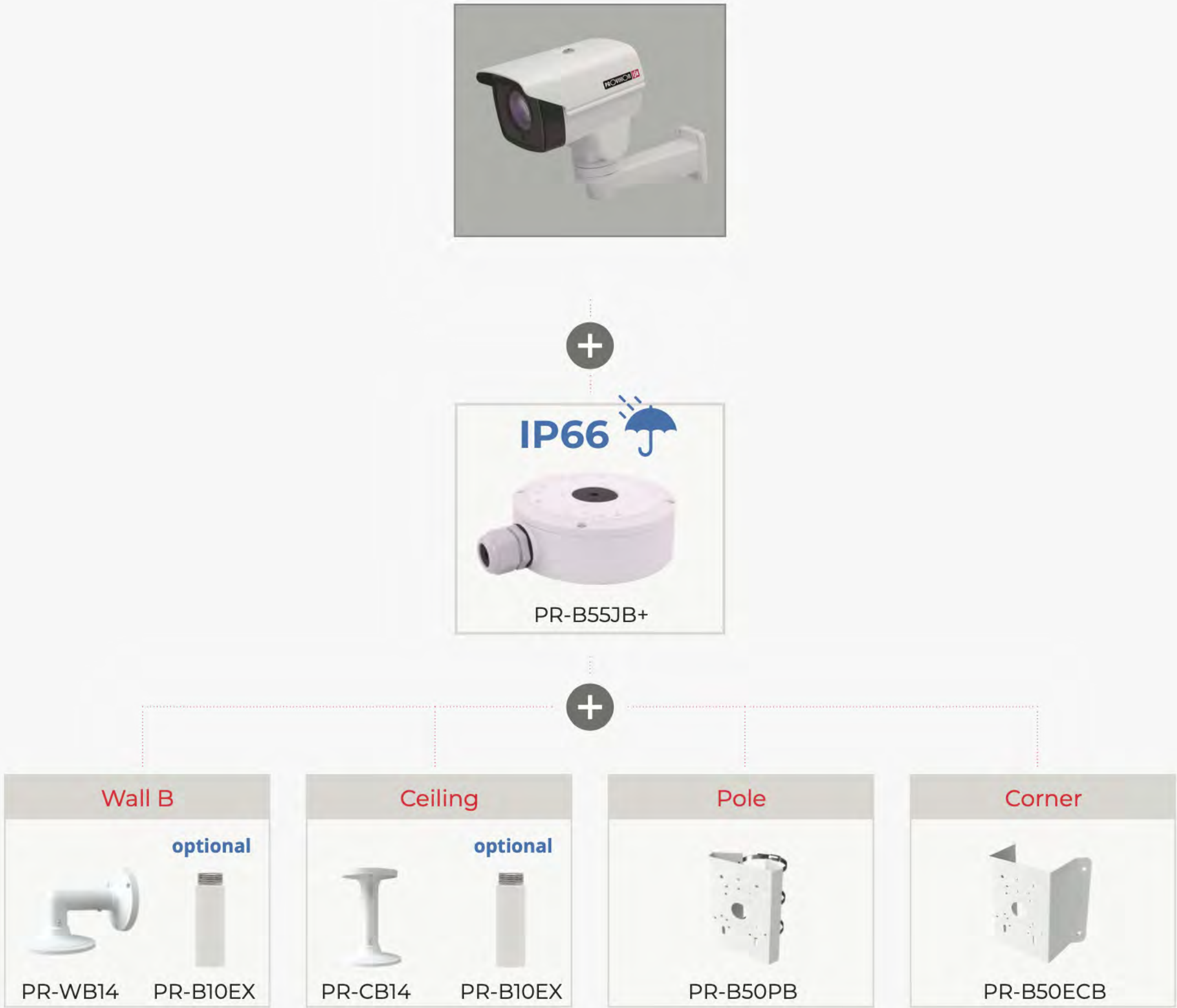
I2 Basic



Bracket matching system



For I5PT / I8PT



Bracket matching system



For Bullet I6-VF Lens, I6-MVF Lens, BLH-MVF Lens



Bracket matching system



For I4-Fixed Lens, I4-VF Lens, I4-MVF Lens, BMV-Fixed Lens & BMH-Fixed Lens, BMH-MVF Lens



Bracket matching system



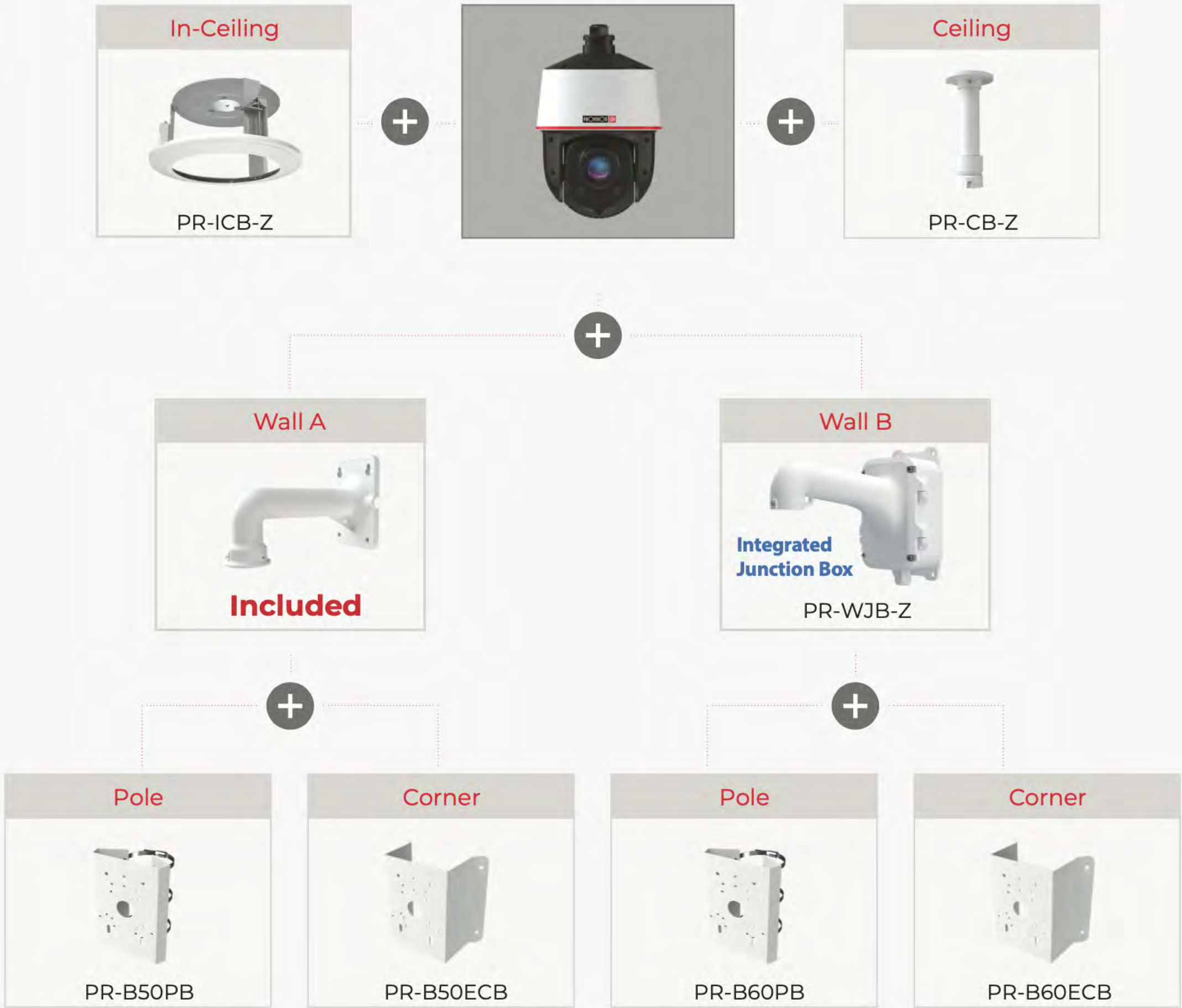
For I2-Fixed Lens & BSV-Fixed Lens



Bracket matching system



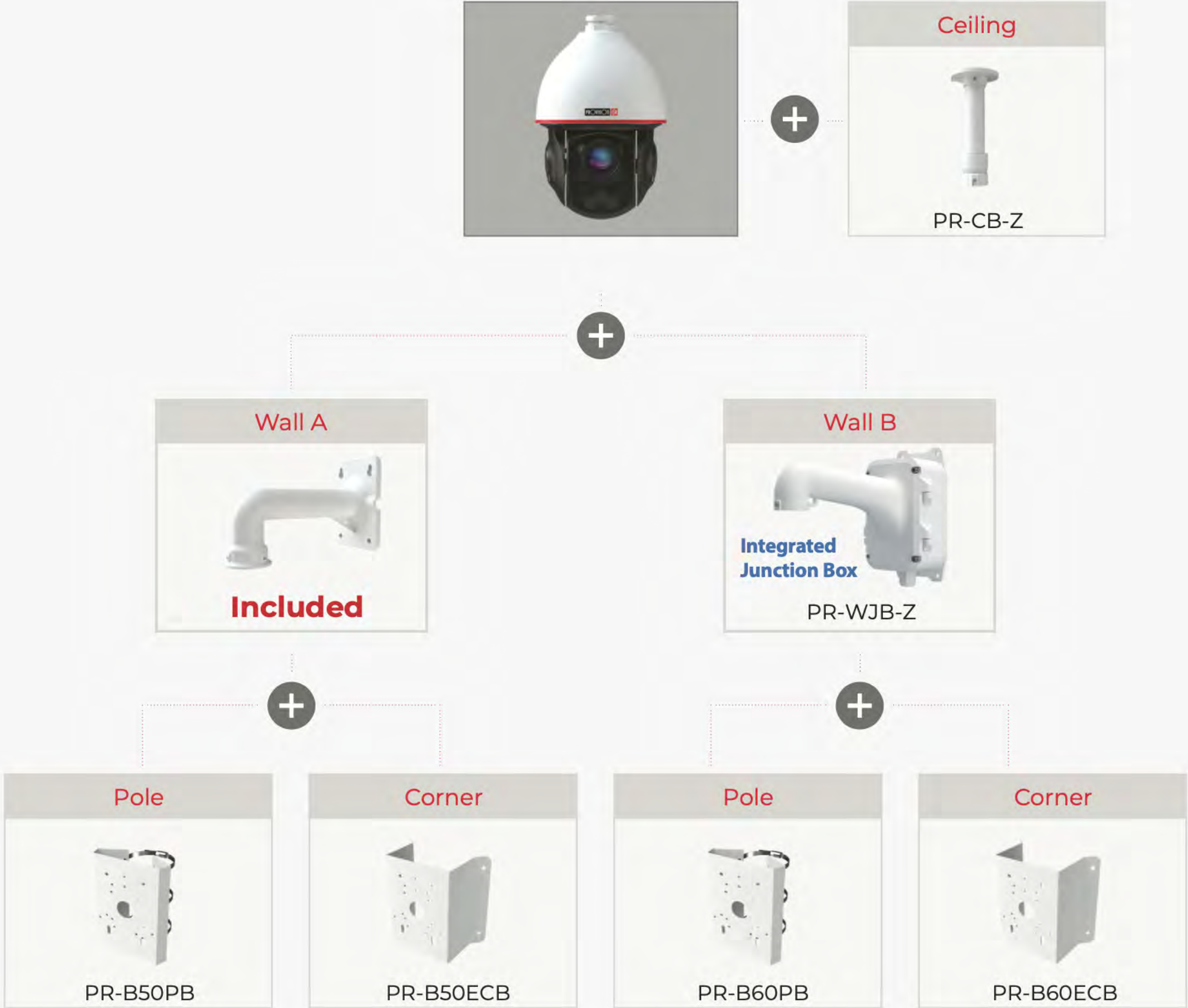
For PTZ-Z4



Bracket matching system



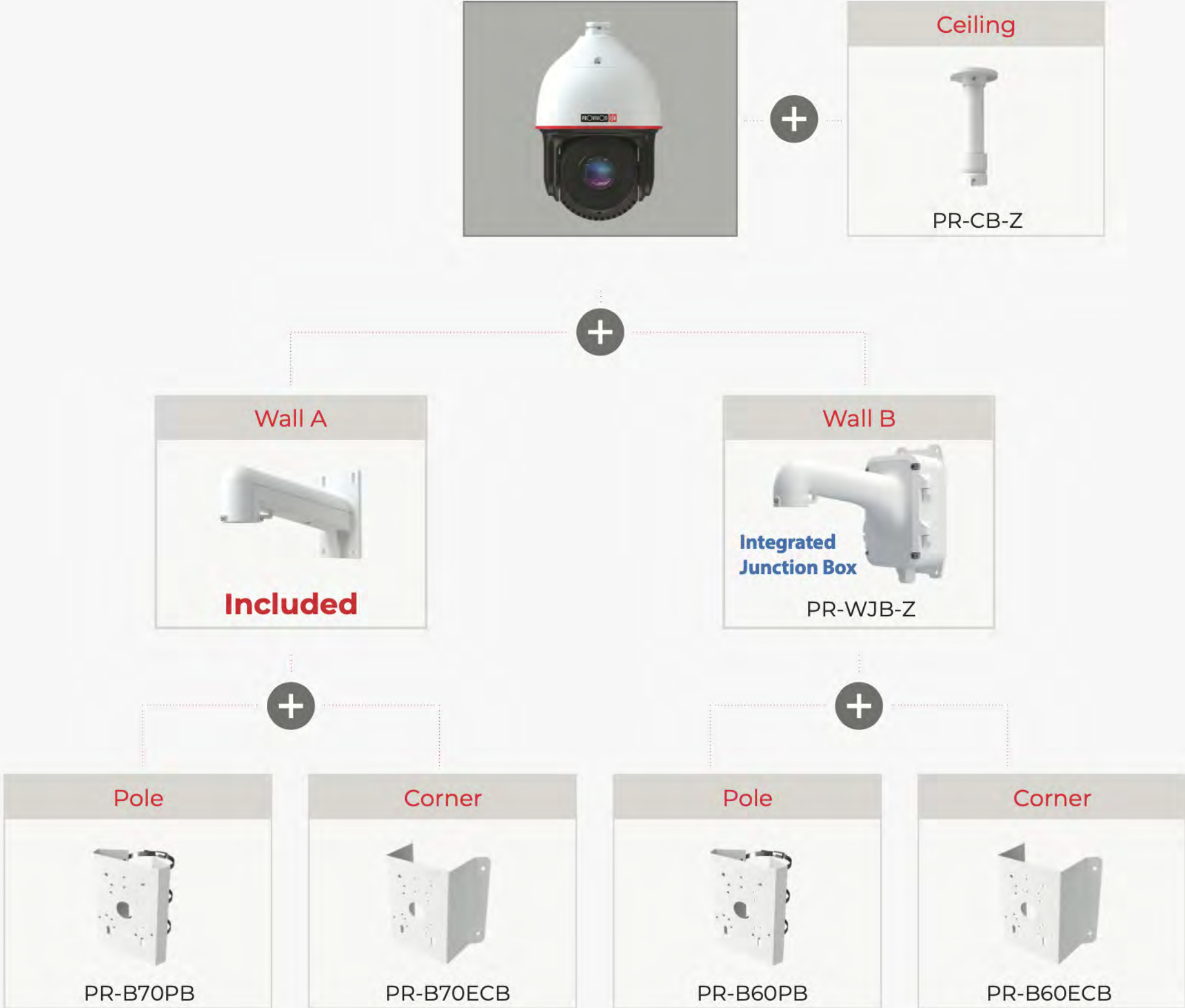
For PTZ-Z5



Bracket matching system



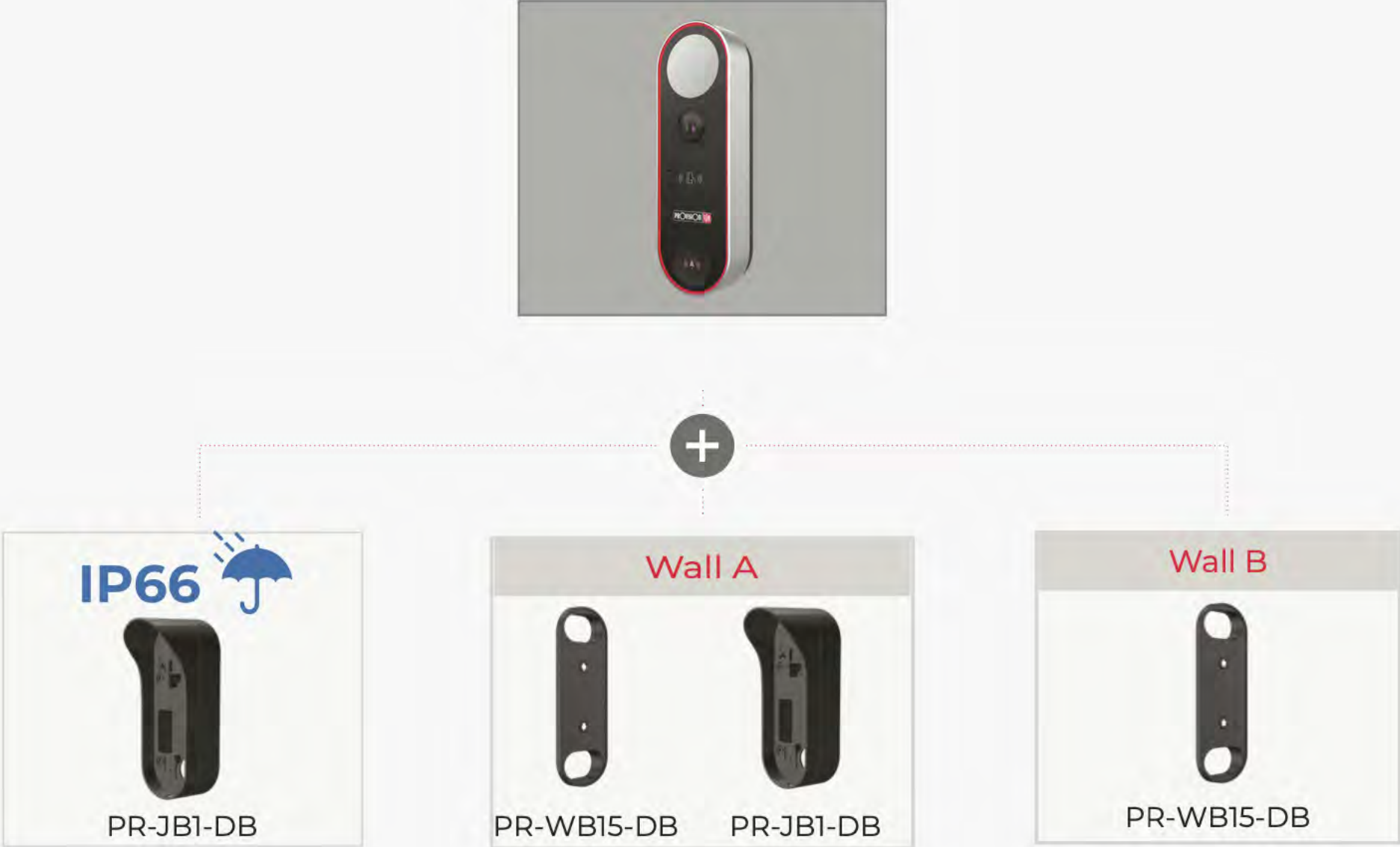
For PTZ-Z6



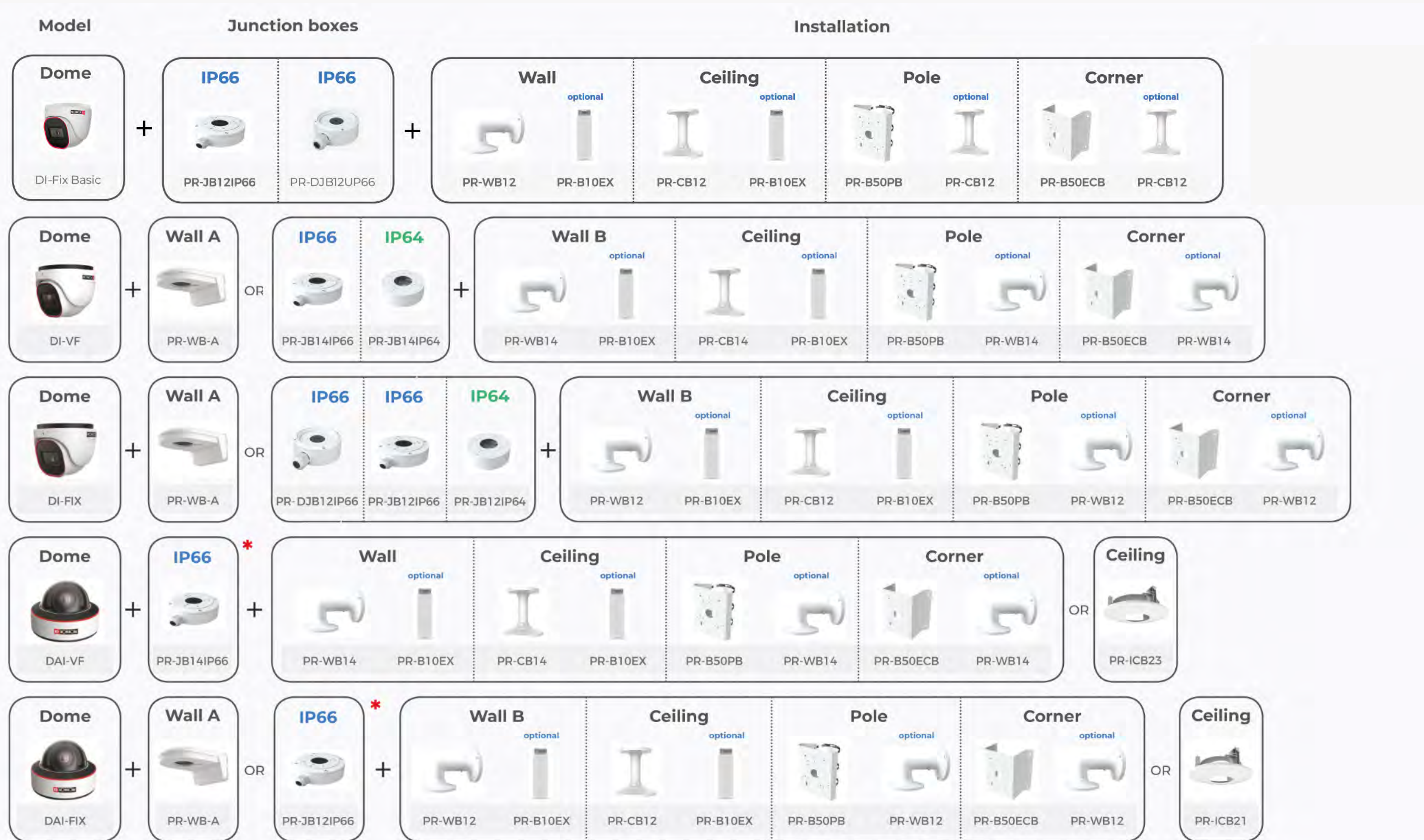
Bracket matching system



For DB-320WIPN



Bracket matching system



Next page >

Bracket matching system



Dome DMA	+	Wall A PR-WB-A	OR	 PR-B10B3B	+	Wall B PR-WB12	optional PR-B10EX	Ceiling PR-CB12	optional PR-B10EX				
Bullet I2-Fix Basic	+	IP66 PR-JB12IP66	+	IP64 PR-JB12IP64	+	Wall PR-WB12	optional PR-B10EX	Ceiling PR-CB12	optional PR-B10EX	Pole PR-B50PB	optional PR-CB12	Corner PR-B50ECB	optional PR-CB12
Bullet I6	+	IP66 PR-JB14IP66	+	IP64 PR-JB14IP64	+	Wall PR-WB14	optional PR-B10EX	Ceiling PR-CB14	optional PR-B10EX	Pole PR-B50PB	optional PR-CB14	Corner PR-B50ECB	optional PR-CB14
Bullet I4	+	IP66 PR-JB12IP66	+	IP64 PR-JB12IP64	+	Wall PR-WB12	optional PR-B10EX	Ceiling PR-CB12	optional PR-B10EX	Pole PR-B50PB	optional PR-CB12	Corner PR-B50ECB	optional PR-CB12
Bullet I2	+	IP66 PR-JB12IP66	+	IP64 PR-JB12IP64	+	Wall PR-WB12	optional PR-B10EX	Ceiling PR-CB12	optional PR-B10EX	Pole PR-B50PB	optional PR-CB12	Corner PR-B50ECB	optional PR-CB12

Next page >

Bracket matching system



PTZ Z4 + **Wall** (Included OR PR-WJB-Z Integrated Junction Box) | **Ceiling** (PR-CB-Z) | **In-Ceiling** (PR-ICB-Z) | **Pole** (PR-B50PB + Included) | **Corner** (PR-B50ECB + Included) | **Pole** (PR-B60PB + PR-WJB-Z) | **Corner** (PR-B60ECB + PR-WJB-Z)

PTZ Z5 + **Wall** (Included OR PR-WJB-Z Integrated Junction Box) | **Ceiling** (PR-CB-Z) | **Pole** (PR-B50PB + Included) | **Corner** (PR-B50ECB + Included) | **Pole** (PR-B60PB + PR-WJB-Z) | **Corner** (PR-B60ECB + PR-WJB-Z)

PTZ Z6 + **Wall** (Included OR PR-WJB-Z Integrated Junction Box) | **Ceiling** (PR-CB-Z) | **Pole** (PR-B70PB + Included) | **Corner** (PR-B70ECB + Included) | **Pole** (PR-B60PB + PR-WJB-Z) | **Corner** (PR-B60ECB + PR-WJB-Z)

Doorbell DB-320WIPN + **Wall A** (PR-JB1-DB IP65) OR **Wall B** (PR-WB15-DB, PR-JB1-DB IP65) | **Wall C** (PR-WB15-DB)